

# success<sup>2</sup>

.com

**Deutsche Post AG bets on  
Directory/Metadirectory from Critical Path and  
the high performance PRIMEPOWER servers**





# Deutsche Post World Net – “We Move The World”

**Deutsche Post World Net has set itself the goal of becoming the number one worldwide logistics enterprise while providing integrated letter, express, logistics and financial services. In order to achieve this goal, the Group will close ranks more tightly in the next few years.**

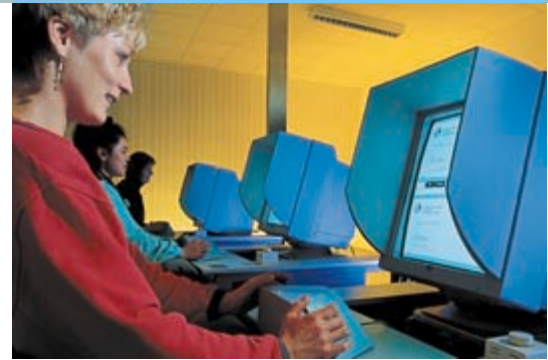
The first technological step in this direction is the creation of Deutsche Post AG's metadirectory. At the same time, this system forms the basis for a company-wide corporate directory. Both directory services are being introduced through the URML (User and Resource Management Solution) project. They represent a consistent database for the future for processes in the area of human resources on each level of the organization.

The goal of the URML Project was the provision of a solution that is tailored specifically to the various demands of these processes in a large company. Deutsche Post AG decided to utilize the software "CP Directory Server" and "CP Meta Directory" from Critical Path Inc. after extensive product tests on the high performance PRIME-POWER servers from Fujitsu Siemens Computers.

## **Deutsche Post World Net**

The Deutsche Post World Net Group with its trademarks Deutsche Post, DHL, Danzas and Postbank is one of the largest and most productive logistics enterprises in the world. Over 300,000 employees generated a turnover of 32.7 billion Euros in the year 2000. The group offers complete solutions for national and international customers, from worldwide letter, package, express and logistics services to innovative solutions for e-business and a broad range of financial services.

Deutsche Post World Net successfully went public in the fall of 2000, and on November 20th, the "Aktie Gelb" was first traded. On March 19, 2001, the Deutsche Post World Net Group was included in the "Deutsche Aktien Index" (German Stocks Index), DAX 30 for short. The "Aktie Gelb" has become one of the top 30 German stocks traded.



## **Company-wide, fast access to business-critical data**

Up to now, there were one or more special directories for each member of the group. This multitude of systems increasingly complicated communication. Because of this, data was being stored and up-dated multiple times. Often, only limited amounts of data were available to individual users, and the management and administration of the different databases were requiring high expenditures.

## **URML project – synchronization of Deutsche Post AGs company data through "CP Directory Server" and "CP Meta Directory" from Critical Path Inc.**

In the course of implementing their metadirectory concept, Deutsche Post AG decided on the products "CP Directory Server" and "CP Meta Directory" from Critical Path Inc. on the PRIMEPOWER servers from Fujitsu Siemens Computers.

Deutsche Post AG's implementation of this solution is the first step in solving the problems addressed. In this way, for example, diverse sources of data are synchronized, email addresses and telephone numbers are exchanged, and organizational data are displayed in a clear and continually up-to-date manner. In this manner, organizational and technical processes within the company are greatly simplified.



CriticalPath™



For Deutsche Post AG, an X.500 based solution was chosen, since the X.500 standard fulfils the requirements with respect to replication, security, and data management more than any other (proprietary) approach. (X.500 is an internationally proven, manufacturer-independent, standardized specification for directories.)

Deutsche Post AG's metadirectory was successfully introduced in the year 2001.

#### **Critical Path**

Critical Path Inc., (Nasdaq CPTH) is the leading provider of complete communication solutions in the field of directory infrastructure, messaging applications for the Internet Service Provider customer segments, mobile and conventional telephone service providers (Telco Carrier), as well as for companies.

The head office of Critical Path is in San Francisco, USA. Currently, there are several continental branch offices with more than 500 employees worldwide.

Germany, Switzerland and Austria are served by Critical Path Central Europe with offices in Berlin, Frankfurt, Bern-Belp and Zürich.

#### **PUMA and PRIMEPOWER 400N – complete solutions from Fujitsu Siemens Computers**

The topology of the Deutsche Post AG's metadirectory provides for a division between five locations: Darmstadt, Berlin, Bonn, Hanover and Augsburg. All the metadirectory components are installed on the master system in Darmstadt, while only those components that are necessary for replication with the master system are installed on the shadow systems. Solaris 7 servers with SPARC Processors from Fujitsu Siemens Computers were chosen as the platform for all systems. PRIMEPOWER 400N rack servers were used for the shadow systems.

In the course of the migration, two dedicated systems were made available to the CP Directory Server and the CP Meta Directory, primarily for reasons of load sharing performance. Together, these two PRIMEPOWER 400N servers form the master system at the Darmstadt location.

The implementation was also designed to be especially customer-friendly. The hardware components of the PRIMEPOWER 400N server were set up in the factory beforehand. Before the start-up of the system at the respective location, the servers were preinstalled with the "Post Unix Master Tape" (PUMA for short) either on site or beforehand in the factory.

The procedure involves a uniform and Post-specific master installation of the operating system and diverse middleware products, so that an untrained employee at the location can even start up the machine. Finally, only then was the application software installed through the software management program utilized by Deutsche Post AG.

All together a smooth integration into the IT environment of Deutsche Post AG.

#### **Internet**

[www.dpwn.com](http://www.dpwn.com)

[www.cp.net](http://www.cp.net)

[www.fujitsu-siemens.com](http://www.fujitsu-siemens.com)



**PRIMEPOWER servers offer**

- In excess of 12,000 applications worldwide
- Round-the-clock availability of systems and applications
- Reliability and quality of Unix mainframes
- A vast choice of products, from mono-processor to 128-processor systems
- Excellent platform for data centre consolidation
- Easy integration of storage solutions for professional data centre operation